



WELCOME

**A NEW ERA DEVELOPERS
MUMBAI**

दुबई या शांघाई जैसे शहर
में निवेश करना है

कब...क्यूँ...कहाँ...कैसे...

कब **PROPERTY** में सही वक्त और
सही जगह पर.

क्यूँ परिवार के **FUTURE** के लिए

कहाँ दुनिया की सबसे बड़ी और भारत की
नम्बर 1 **SMART CITY**

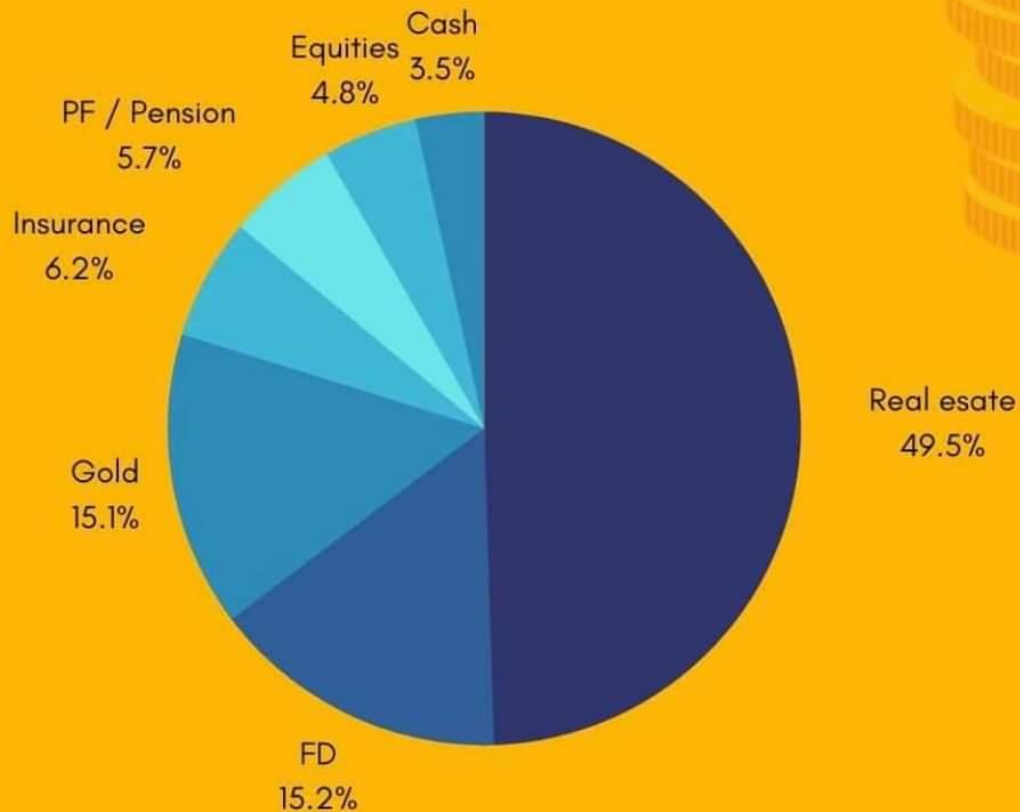
DHOLERA SIR



NA, NOC & TITLE CLEARED PLOTS
RESIDENTIAL, COMMERCIAL & INDUSTRIAL.

MAKE YOUR PROPERTY

WHERE INDIANS PARK THEIR MONEY



|| SHREE ||

INDIA'S FIRST GREENFIELD SMART CITY

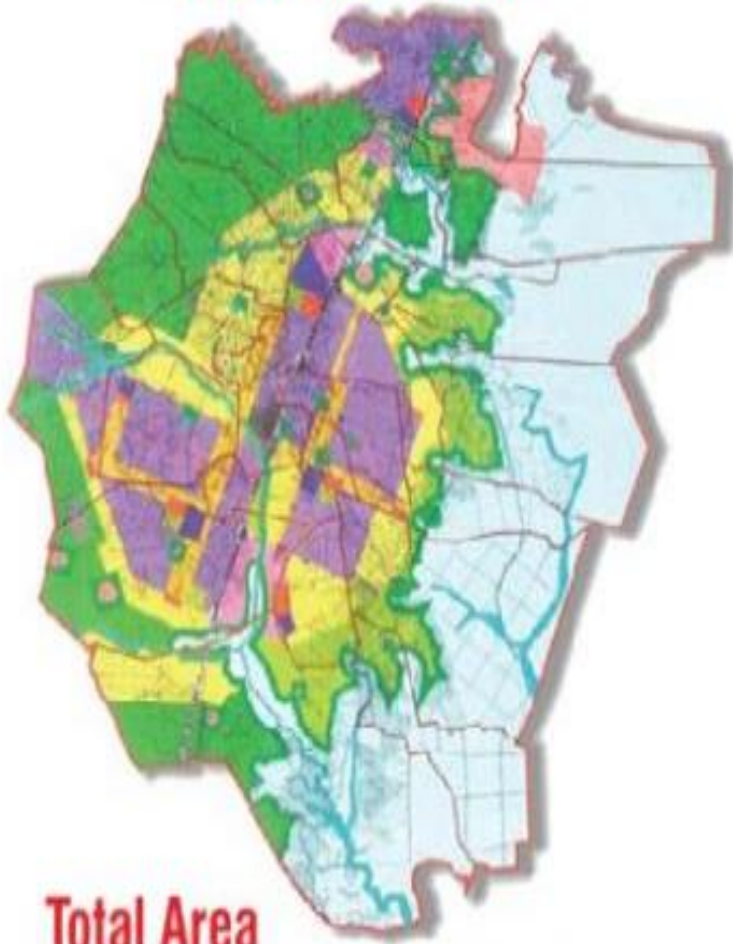
DHOLERA SIR

(It's Like DUBAI, SINGAPORE & SHANGHAI)



DHOLERA SIR ... Bigger than Singapore.

DHOLERA SIR



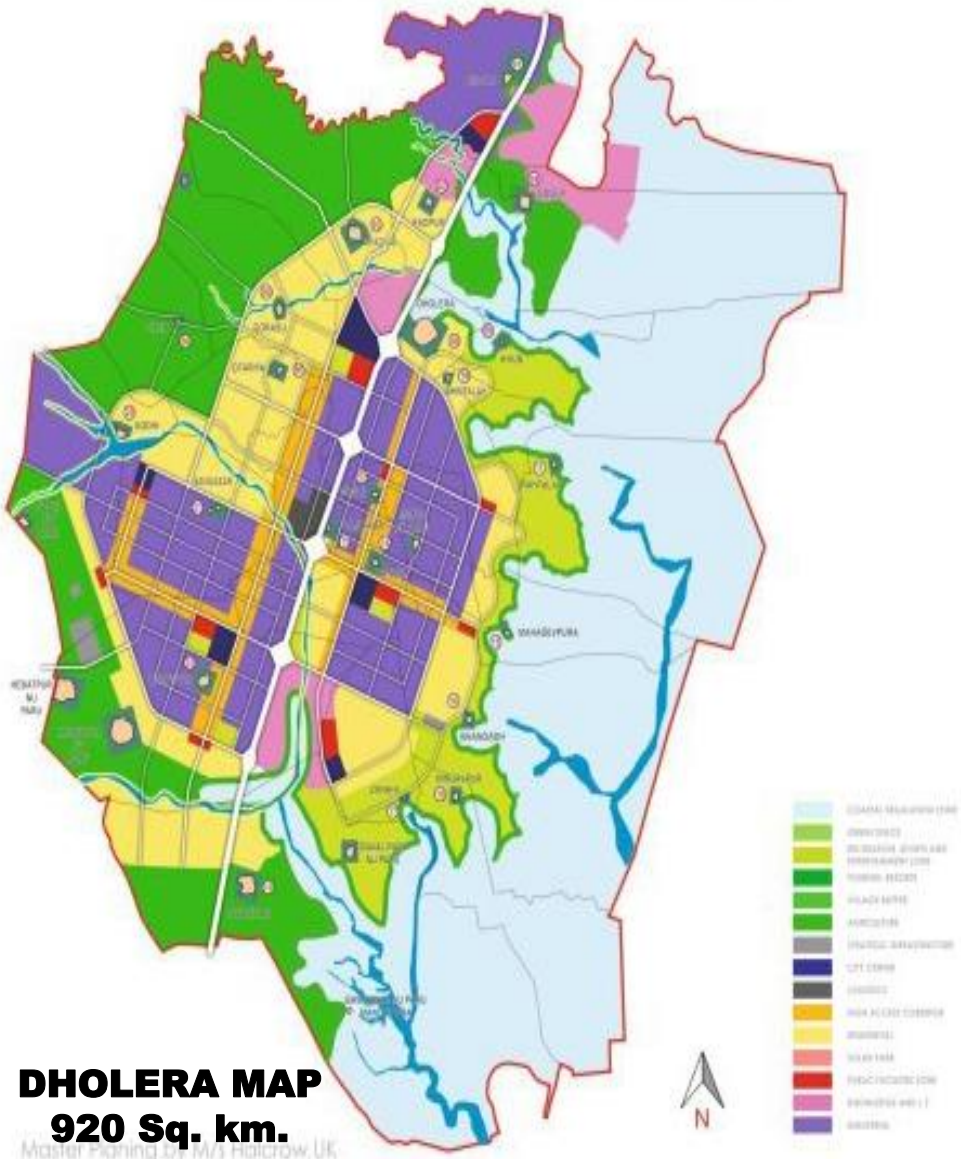
Total Area
91,970 Ha (920 Sq Km)

SINGAPORE



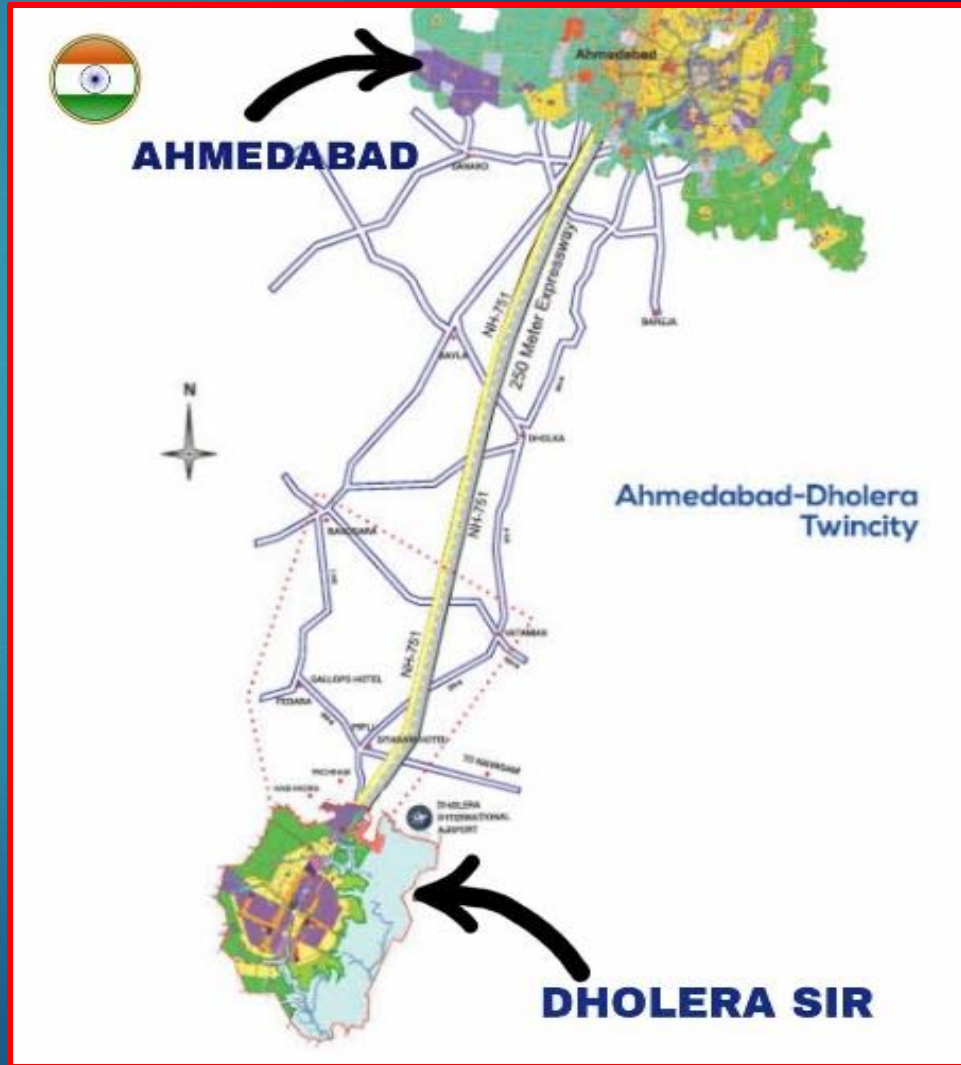
Total Area
72,860 Ha (728 Sq Km)

DHOLERA SIR ... Bigger than MUMBAI.



MUMBAI MAP
603.4 Sq. km.

THE
Future
IS HERE!



DHOLERA SIR DEVELOPED BY



WIPRO

INFORMATION & COMMUNICATION
TECHNOLOGY



CISCO

NETWORK DEVELOPING
& MANUFACTURING COMPANY

HALCROW

INFRASTRUCTURE COMPANY



IBM

NETWORK DEVELOPING
& MANUFACTURING COMPANY



dholera



India's First Green Field Smart City

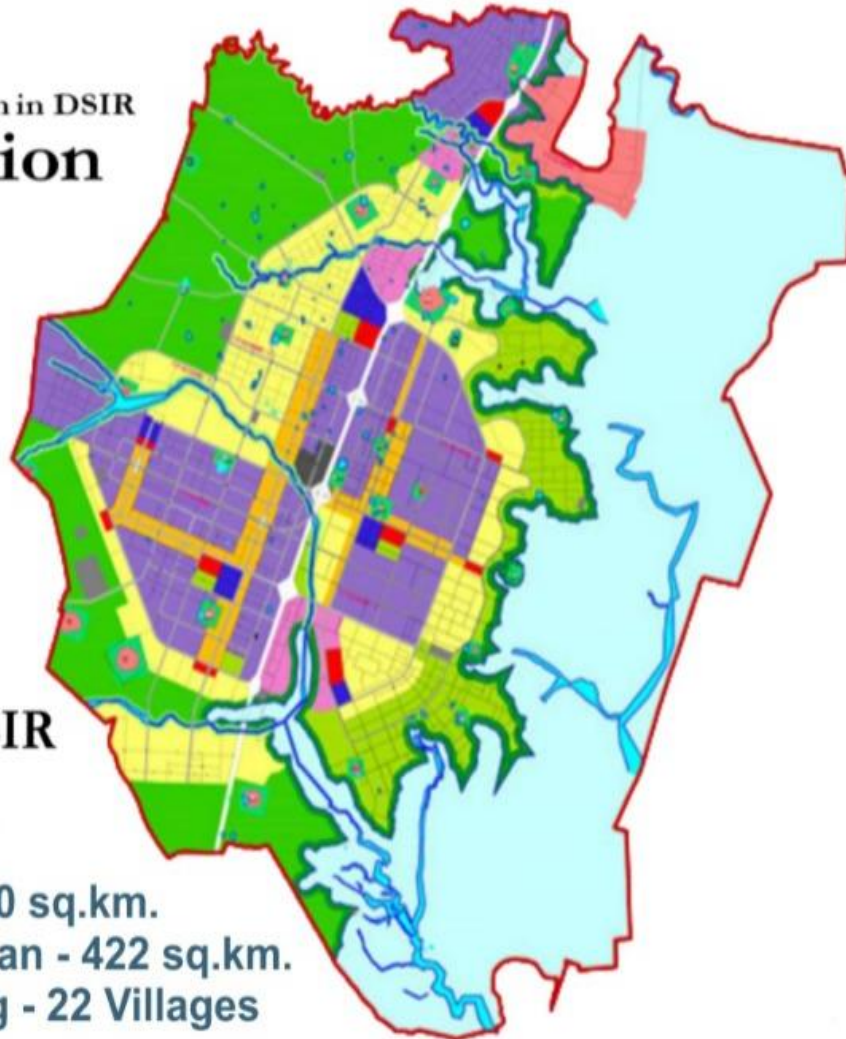
A "Platinum"
Rated Green City

Resident population in DSIR
2.0 million



Total Jobs in DSIR
827 Thousand

Area - 920 sq.km.
Development Plan - 422 sq.km.
Town Planning - 22 Villages



LEGEND

- DSIRDA BOUNDARY
- T P SCHEME BOUNDARY
- GAMTAL
- RIVER / CANAL
- TALAV / LAKE
- DP PROPOSED ROADS
- T P SCHEME ROADS
- COASTAL REGULATION ZONE
- GREEN SPACE
- RECREATION SPORTS AND ENTERTAINMENT ZONE
- TOURISM: RESORTS
- VILLAGE BUFFER
- AGRICULTURE ZONE
- STRATEGIC INFRASTRUCTURE ZONE
- CITY CENTRE
- LOGISTICS
- HIGH ACCESS CORRIDOR
- RESIDENTIAL ZONE
- SOLAR PARK
- PUBLIC FACILITIES ZONE
- KNOWLEDGE AND I.T. ZONE
- INDUSTRIAL ZONE

Dholera



India's 1st "Platinum" Rated
Greenfield Industrial City



Plug &
Play



Social
infrastructure



Sustainability



Ease of
business



World Class
Infrastructure



Ease of
governance



External
connectivity



Technology

Smart Infrastructure (Plug and Play Model)

dhollera
— A NEW ERA —



Road
Cycle tracks
Footpaths
Trees & Plants



Water
Management
Smart meters
SCADA



24X7 Power
Smart meters
SCADA



ICT enabled infrastructure
City WiFi
Integrated city management



100% domestic
waste collection
100% industrial
effluent collection



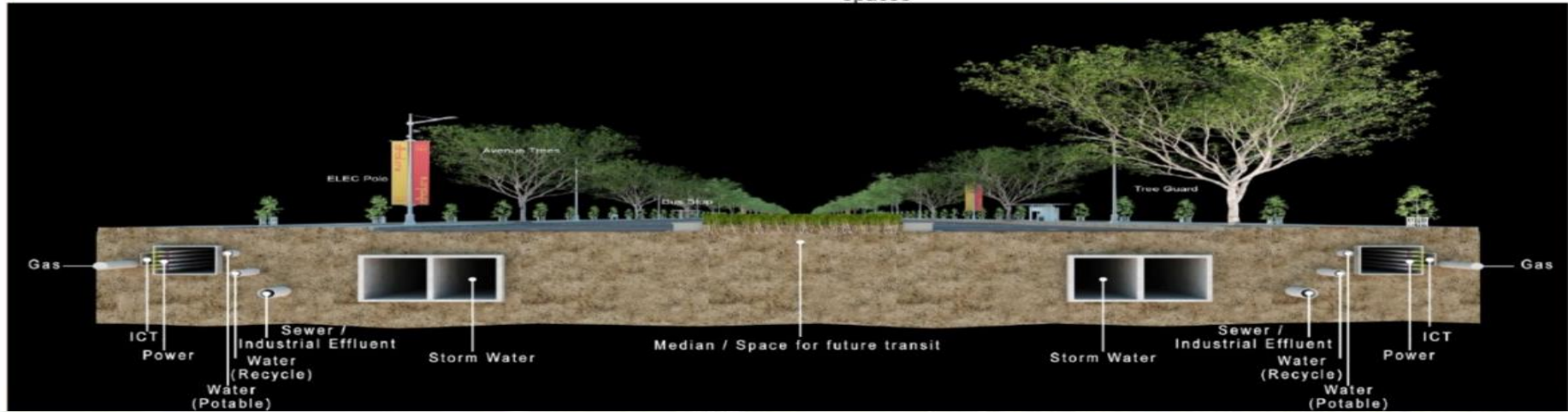
100% recycle and
reuse of waste
water



100% rainwater
collection
Open storm canal
with recreational
spaces



100% waste collection
Maximum recycling and reuse
Bio-Methaneation, Incinerator
Waste to energy

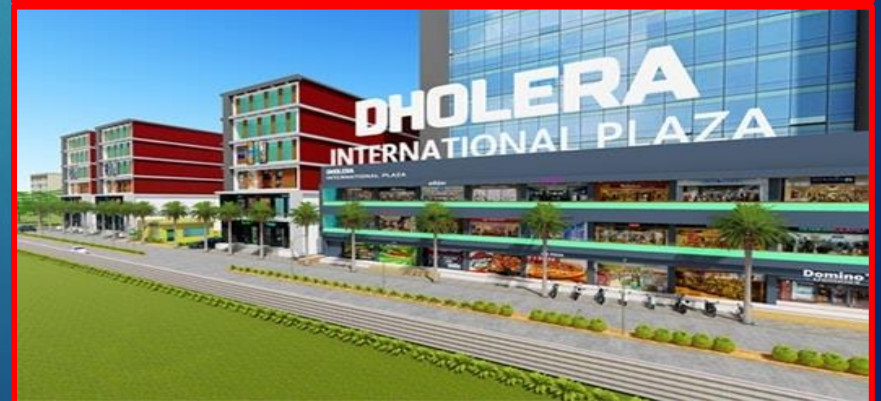


30% RESIDENCIAL & 70% COMMERCIAL - INDUSTRIAL



A New Gujarat,
Within Gujarat

Lily Dholera Industrial Park



WHY DHOLERA SIR IN AHMEDABAD

**GOVT.
LAND**

- **28,503 Hectares**
- **70,432 ACRE**

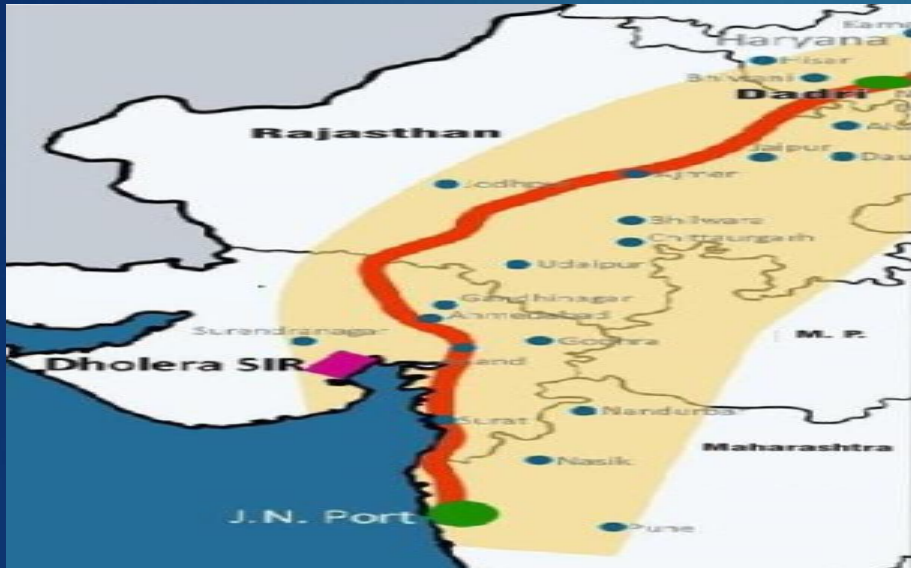
**Local
Land**

- **13,497 Hectares**
- **33,351 ACRE**

**Total
Land**

- **100% Table Land**

LOGISTIC SUPPORT FOR **DHOLERA S.I.R.**



DMIC ROAD TRANSPORT



TRAIN TRANSPORT

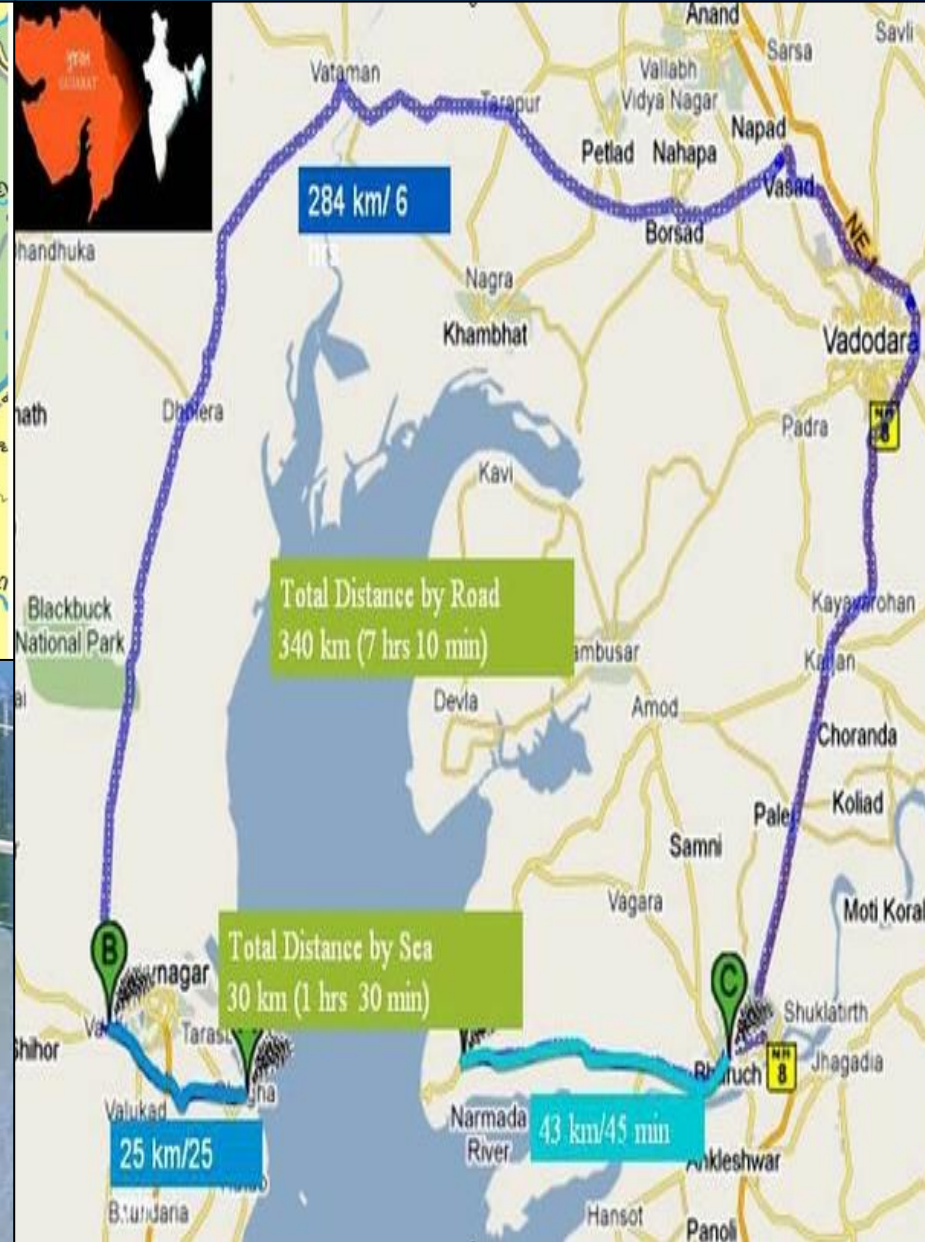


CARGO & INTERNATIONAL AIR PORT



DHOLERA SEA PORT

KALPASAR DAM (DAHEJ TO BHAVNAGAR)



TATA POWER – SOLAR PARK 2500 MW COMPLETED (ACTUAL IMAGE)



TATA POWER



for immediate use **PRESS RELEASE**

Tata Power Renewables Commissions 300 MW Solar plant in Dholera, Gujarat with India's largest single axis solar tracker system

- Plant to reduce carbon emission by 704340 MT/year

National, 4th April, 2022: Tata Power Renewables Energy Ltd (TPREL), a wholly-owned subsidiary of Tata Power has commissioned a 300 MW project in Dholera, Gujarat. It is India's largest single-axis solar tracker system. The project will generate 774 MUs annually. Along with this, it will reduce approximately 704340 MT/year of carbon emission. The installation entails 873012 nos. of Monocrystalline PV Modules. The project was commissioned well within the stipulated timeline.

With the addition of 300 MW, the renewables capacity in operation for Tata Power will now be 3,400 MW with 2,468 MW of Solar and 932 MW of Wind. Tata Power's total Renewable capacity is 5,020 MW including 1,620 MW of Renewable projects under various stages of implementation.

TORRENT POWER (SOLAR ELECTRICITY SUPPLY PLANT)



ABCD BUILDING - SINGLE WINDOW CLEARANCES



dholera[®]
— A NEW ERA —

City Infrastructure

- Power
- Sewage
- Water
- Solid Waste
- Transport
- Gas

- Other Data Integration
- Crime and Criminal Tracking System (CCTNS)
- Law Enforcement
- Regional Traffic Operations



DHOLERA ABCD BUILDING (ACTUAL Images)



Land Allotment Completed



TATA CHEMICALS LIMITED

126 Acres

10 GwH Li-ion Battery
Manufacturing Plant



100 Acres

2 GW Solar Module Manufacturing
Plant



6 Acres

Power Distribution Network in Dholera SIR



3 Acres

Petrol Stations & EV Charging Station

Consideration of DSIR as potential industrial investment (April 2022) by:



150 Acres

Solar Wafer
Solar Cell & Module



400 + 300 Acres

LED FAB
Semiconductor Facility
Under the MeITY PLI



90 Acres

Aluminum Foil &
Flexible Packaging



100 Acres

5 GW Solar Cell &
Module Manufacturing
Plant



30 Acres

Wire, Cables &
Accessories



15 Acres

Beverage Company



AIRBUS-TATA AIRCRAFT MANUFACTURING TO START SOON IN DHOLERA SIR

C295

56 aircraft for India



A truly
“**Make in India
programme**”

A partnership between:

AIRBUS



**Versatile
and efficient:**

A real multi-role aircraft.
Operation in short and
unpaved runways



**Indian
technology:**

Indigenous Self-
Protection system
from Indian BEL/BDL

Joint collaboration:



First 16 aircraft
assembled in **Seville, Spain**



Remaining 40 aircraft
assembled in **India**

Industrial Footprint:

Final assembly line and supply chain in India
with capacity for 12 aircraft per year
operated by TATA with the same standards
as Airbus Final Assembly Line in Spain

Boosting India's aerospace sector with:



15,000

high skilled
jobs

10,000

indirect jobs in
the next 10 years



**Transport
capacity**
Up to

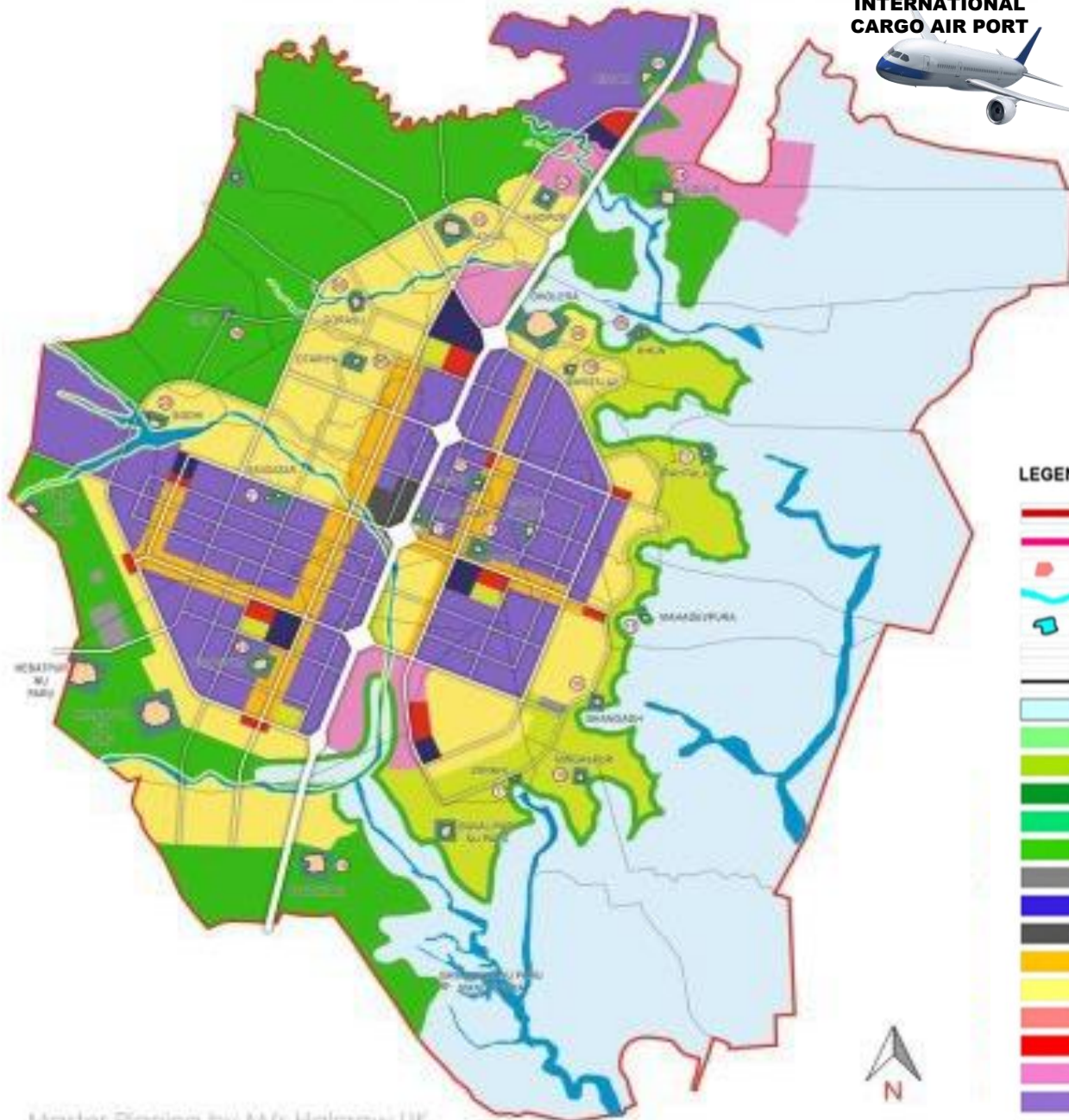
71 Troops or **50** Paratroops

5 Standard
pallets

24 Healthcare
units

AIRBUS

INTERNATIONAL CARGO AIR PORT



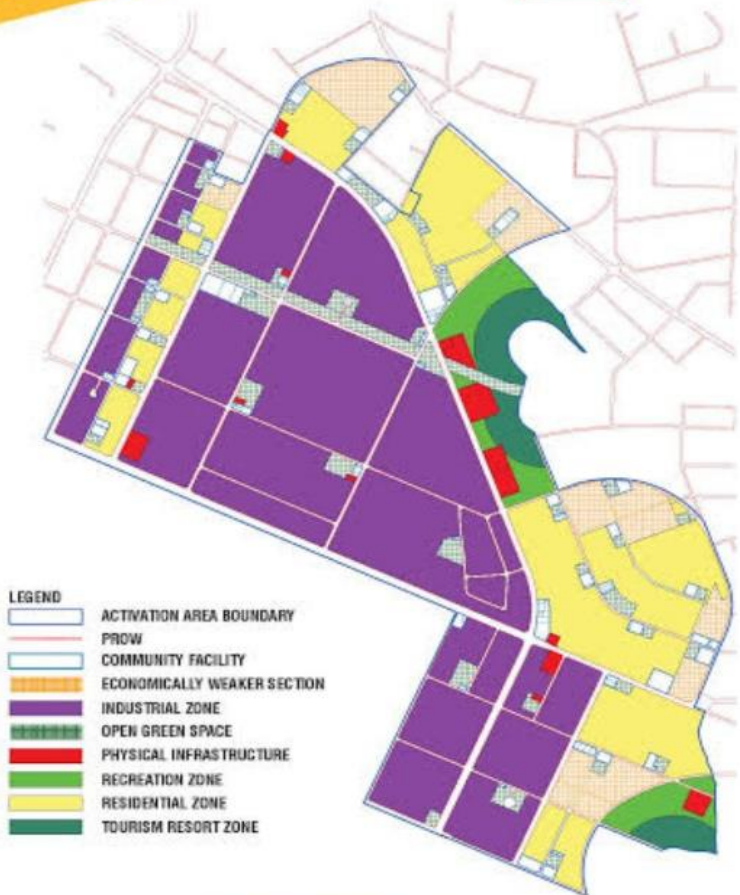
LEGEND

- DSIRDA BOUNDARY
- T P SCHEME BOUNDARY
- GAMTAL
- RIVER / CANAL
- TALAV / LAKE
- DP PROPOSED ROADS
- T P SCHEME ROADS
- COASTAL REGULATION ZONE
- GREEN SPACE
- RECREATION SPORTS AND ENTERTAINMENT ZONE
- TOURISM: RESORTS
- VILLAGE BUFFER
- AGRICULTURE ZONE
- STRATEGIC INFRASTRUCTURE ZONE
- CITY CENTRE
- LOGISTICS
- HIGH ACCESS CORRIDOR
- RESIDENTIAL ZONE
- SOLAR PARK
- PUBLIC FACILITIES ZONE
- KNOWLEDGE AND I.T. ZONE
- INDUSTRIAL ZONE



ACTIVATION AREA & LINEAR DEVELOPMENT PLAN

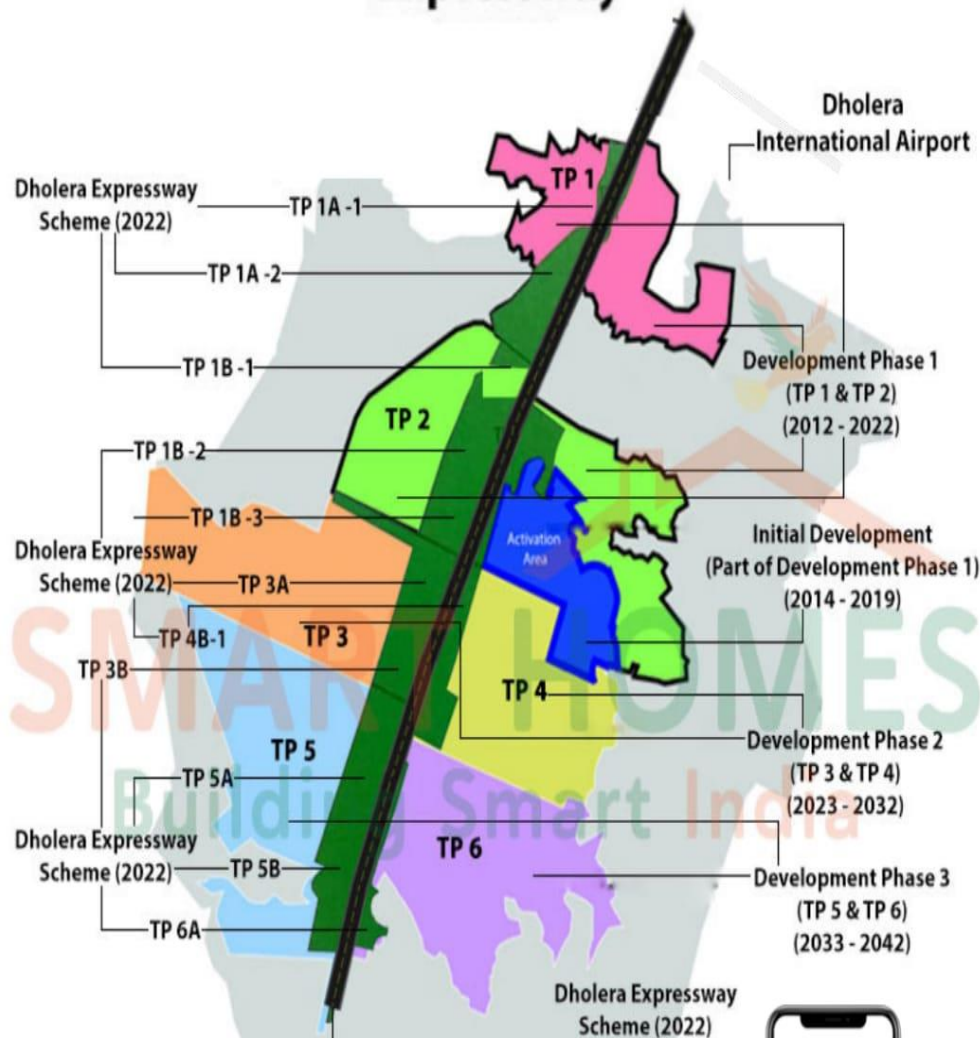
LAND USE PLAN OF ACTIVATION AREA



- LEGEND**
- ACTIVATION AREA BOUNDARY
 - PROW
 - COMMUNITY FACILITY
 - ECONOMICALLY WEAKER SECTION
 - INDUSTRIAL ZONE
 - OPEN GREEN SPACE
 - PHYSICAL INFRASTRUCTURE
 - RECREATION ZONE
 - RESIDENTIAL ZONE
 - TOURISM RESORT ZONE



Ahmedabad-Dholera-Bhavnagar Expressway





DEPARTMENT FOR PROMOTION OF
INDUSTRY AND INTERNAL TRADE
MINISTRY OF COMMERCE & INDUSTRY
GOVERNMENT OF INDIA

INVEST IN THE FUTURE

NATIONAL INDUSTRIAL CORRIDOR DEVELOPMENT PROGRAMME

India's pioneering infrastructure inline with PM GatiShakti programme
with plug & play model converging next-generation technologies.



INVEST NOW

Land Available

 Industrial **2636** Acre  Other Use* **3334** Acre

*Commercial/Residential/Institutional

Available Plots Size

1000 sqm.-332 Acre

Flexible payment option,

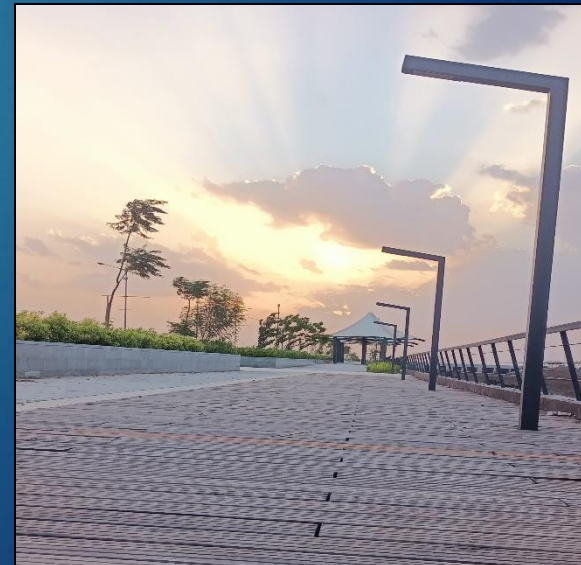
Discount for earlybird/anchor investors

 Land Allotted
851 Acre

 Investment Mobilised
16760 Crore



Artificial Canal (Actual Images)



SITE VISIT ACTUAL Images



today's plan • tomorrow's success



SITE VISIT ACTUAL Images



SITE VISIT ACTUAL Images

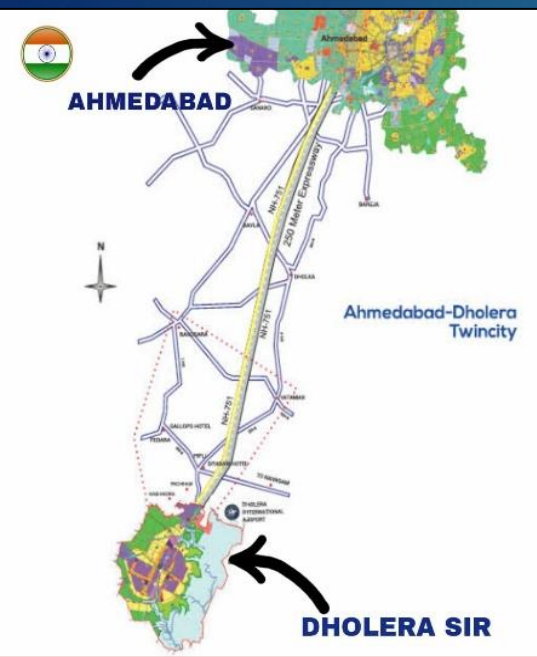
ABCD Building



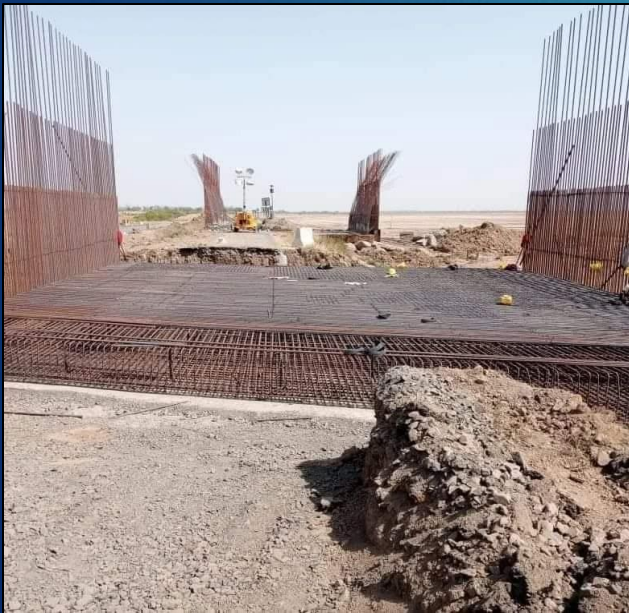
Ahmedabad To Dholera EXPRESS WAY (Actual Image)



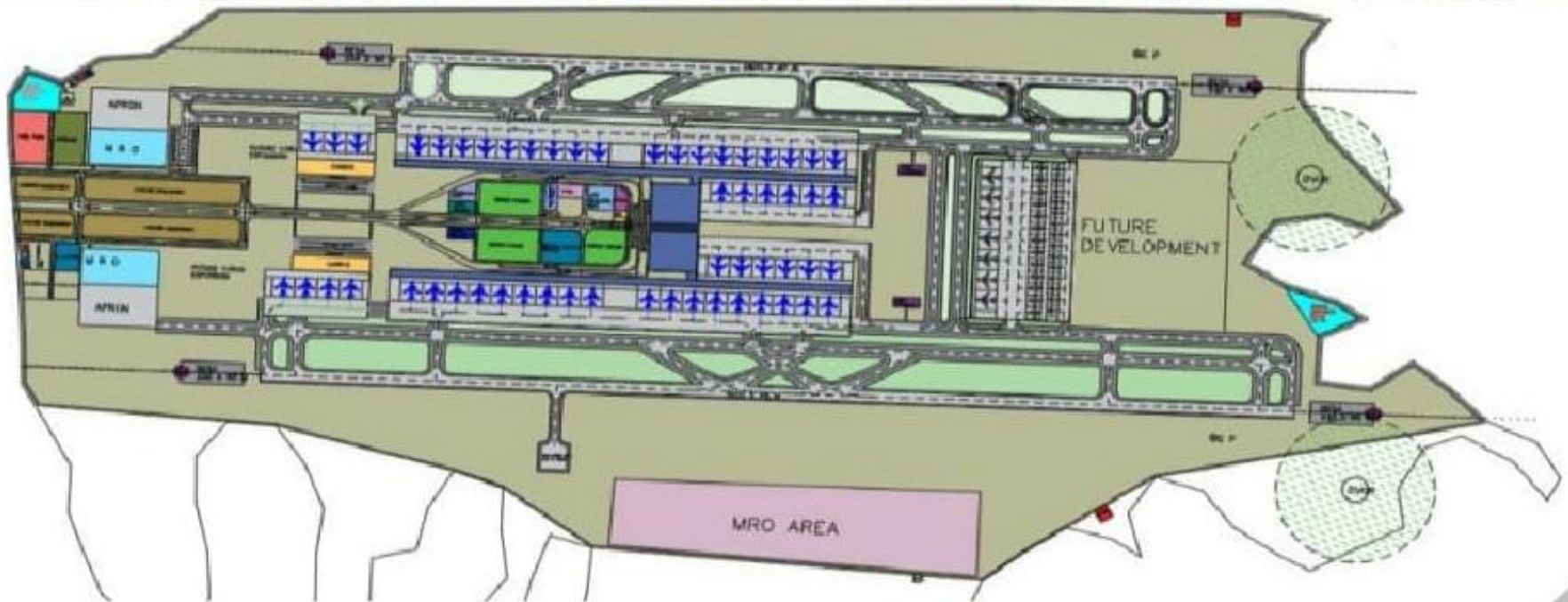
AHMEDABAD - DHOLERA EXPRESS HIGHWAY work started



INTERNATIONAL AIRPORT work started in DHOLERA SIR



INTERNATIONAL AIRPORT DHOLERA SIR



MUMBAI TO AHMEDABAD FOR **DHOLERA S.I.R.**

High Speed Rail Project (Bullet Train)

Between Ahmedabad and Mumbai



PROPOSED HALTS:



दिन-रात चल रहा है बुलेट ट्रेन का कार्य



निर्माणाधीन
आणंद / नडियाद
स्टेशन



औसत समय : 2 घंटे

मुंबई से अहमदाबाद



508 कि. मी.



अधिकतम परिचालन गति



320 कि. मी. / प्रति घंटा

स्टेशन : 12

MUMBAI - AHMEDABAD BULLET TRAIN



SURAT HSR STATION SITE - DECEMBER 2020



THEN FEBRUARY 2022



SURAT HSR STATION SITE - DECEMBER 2022



NOW FEBRUARY 2023



THE TIMES OF INDIA

Canada to invest ₹6k cr in Dholera SIR

Partner Country To Invest In Roads, Other Infra

Kapil Dave@timesgroup.com

Gandhinagar: A key country partner in the 7th Vibrant Gujarat Global Investors Summit, Canada, has proposed to invest Rs 6,000 crore in the Dholera Special Investment Region (SIR). Canada Trade Commissioner and Gujarat government will sign a formal Expression of Interest (EOI) at the upcoming Vibrant Summit.

Canada's John Baird, minister of foreign affairs and two other ministers, along with senior government officials have also confirmed participation at the summit. Sources close to the development said: "The Canada trade commissioner will sign an MoU with Gujarat government on behalf of various com-



The venue being readied to host the mega summit

panies, for the development of key infrastructure projects at Dholera SIR. It will invest in developing roads and other basic infrastructure. The Canada Trade high commissioner will sign MoUs for Rs 6,000 crore of invest-

ment. Several Canadian companies are also keen to invest in defence manufacturing and other sectors. Government of India's DMICDC (Delhi Mumbai Industrial Corridor Development Corporation) has also committed to invest a whopping Rs 3,000 crore at on-

VIBRANT SUMMIT '15

Cops to host tech summit on Jan 2

The state home department and police department will host a day-long National Traffic Technology Summit at YMCA Club on January 2 as a pre-Vibrant Gujarat event. Police officials said they will explore collaborations with institutes and exhibitors at the summit but are not expecting any MoUs. The state cops told media on Tuesday that the three-tier conference agenda includes 'Smart Traffic Management, Smart traffic Enforcement and Smart Accident Investigation'. "Four IPS officers have been part of the managing committee. A number of issues related to the current traffic scenario and probable solutions will be discussed," said an official.

₹1,665Cr Gujarat-Rlys MoU in pipeline

Gujarat Government and the ministry of railways' Rail Vikas Nigam Ltd (RVNL) are also likely to sign an MoUs for the Ahmedabad regional rail project. A joint venture company of the two will invest Rs 1,665 crore in the first phase, connecting Ahmedabad to periphery towns like Sanand, Kalol, Virrangam, etc.

go to boost the Dholera Special Investment Region (DSIR) which is a key project in the DMIC. DMICDC and Gujarat government have decided to form a new SPV to expedite the project. If sources close to the development to be believed, more than MoUs worth more than Rs 50,000 crore are expect-

ed for investment in the Dholera SIR at the upcoming summit. At the 2009 Vibrant summit, three investors had announced investments of Rs 1 lakh crore, but they didn't turn up. Now, after DMICDC's direct involvement in the project, it is expected that the project will get a new lease of life.

ગુજરાત/અમદાવાદ

દિવ્ય ભાસ્કર, અમદાવાદ, શનિવાર, 26 ડિસેમ્બર, 2020

હવે ભારતીય વિદ્યાર્થીઓને મેડિકલ અભ્યાસ માટે વિદેશ નહીં જવું પડે, અહીં જ વિદેશી યુનિવર્સિટીમાં એડમિશન મળશે. ઓક્સફોર્ડ, કમ્બ્રિજ અને યેલ જેવી યુનિ.ઓ. ગુજરાતમાં આવશે. ધોલેરામાં સાઉથ એશિયાનો પ્રથમ સ્પેશિયલ એજ્યુકેશન રિજિયન બનશે, એક જ સ્થળે વિશ્વના તમામ કોર્સનો અભ્યાસ થઈ શકશે.

26/12/2020

ગુજરાતના ધોલેરામાં 5000 એકર જેટલા વિશાળ વિસ્તારમાં સાઉથ એશિયાનો પહેલો સૌથી મોટો સ્પેશિયલ એજ્યુકેશન રિજિયન બનશે જેમાં વિશ્વની શ્રેષ્ઠતમ યુનિવર્સિટીઓ જેવી કે ઓક્સફોર્ડ, કમ્બ્રિજ અને યેલ જેવી સંસ્થાઓ પોતાના કેમ્પસ અહીં સ્થાપશે અને હાલ દુનિયામાં ઉપલબ્ધ એવા લગભગ તમામ અભ્યાસક્રમો અહીં વિદ્યાર્થીઓને ઓફર કરાશે. ભારતીય વિદ્યાર્થીઓને વિશ્વની

શ્રેષ્ઠ યુનિવર્સિટીમાંથી ડિગ્રી મેળવવા માટે જ્યાં લખલુટ ખર્ચે વિદેશમાં જવું પડે છે અને ઘરથી દૂર રહેવાથી ઘણી મુશ્કેલીઓનો સામનો કરવો પડે છે, તેને સ્થાને હવે અહીં જ આ અભ્યાસક્રમો ઉપલબ્ધ રહેશે. ગુજરાત સરકારે હાલમાં જ મુખ્યમંત્રી વિજય રૂપાણીની ઉપસ્થિતિમાં ધોલેરામાં ગુજરાત સ્પેશિયલ એજ્યુકેશન રિજિયન સ્થાપવા માટે તેલંગાણાની સેરેસ્ટ્રા વેન્ચર્સ નામની ભારતની સૌથી મોટી એજ્યુકેશન ઈન્ફ્રાસ્ટ્રક્ચર ફંડ સંસ્થા સાથે

એમઓયુ કર્યા છે, તે કેટલગ આ મોટું એજ્યુકેશન સેન્ટર બનાવવા જઈ રહ્યું છે. સૌથી મોટી વિશેષતા આ એજ્યુકેશન રિજિયનની એ રહેશે કે અહીં વિદેશી મેડિકલ કોલેજ્સ પણ આવશે. ગુજરાત અને ભારતના વિદ્યાર્થીઓને અહીં મેડિકલ સીટ ઓછી હોવાથી રશિયા, ચીન કે અન્ય દેશોમાં જવું પડે છે; તેવું નહીં બને. પ્રમાણમાં ઓછા ખર્ચે માટે હોસ્ટેલો, સ્પોર્ટ્સ કોમ્પ્લેક્સ, લાયબ્રેરી, રીજિયોશન ઝોન, શોપિંગ અને ઘણી બધી સુવિધાઓ ઉપલબ્ધ હશે.

આ સ્પેશિયલ એજ્યુકેશન રિજિયન શરૂઆતમાં 1000 એકરમાં પથરાયેલું હશે અને તેના માટે 5000 એકર જેટલો વિશાળ વિસ્તાર અંકિત કરવામાં આવ્યો છે. તેની અંદર વિવિધ વિભાગોમાં યુનિવર્સિટી ડિસ્ટ્રીક્ટ, સ્કૂલ ડિસ્ટ્રીક્ટ, ડિસ્ટ્રવરી ડિસ્ટ્રીક્ટ, ઈનોવેશન ડિસ્ટ્રીક્ટ, ઉપરાંત કોમન ઈન્ફ્રાસ્ટ્રક્ચરમાં વિદ્યાર્થીઓ માટે હોસ્ટેલો, સ્પોર્ટ્સ કોમ્પ્લેક્સ, લાયબ્રેરી, રીજિયોશન ઝોન, શોપિંગ અને ઘણી બધી સુવિધાઓ ઉપલબ્ધ હશે.

આવનારા સમયમાં વિશ્વની 100 શ્રેષ્ઠતમ યુનિવર્સિટીઓ આ કેમ્પસમાં આવી શકે તેવું આયોજન સરકારી તિજોરી પર ભારણ નહીં આવે. ઓક્સફોર્ડ જેવી યુનિવર્સિટીઓ ગુજરાતમાં કાર્યરત થાય તે આમ જોઈએ તો સ્વપ્ન જેવું લાગે છે, પરંતુ હવે આ સ્પેશિયલ એજ્યુકેશન રિજિયનને કારણે તે શક્ય બનશે. સેરેસ્ટ્રા જૂથને આ પ્રકારના એજ્યુકેશન ઈન્ફ્રાસ્ટ્રક્ચર ઊભા કરવાનો બહોલો અનુભવ છે. ગુજરાત સરકાર આ પ્રકારનું એજ્યુકેશન રિજિયન બનાવવા માટે સેરેસ્ટ્રાને કોઈપણ ઈ-સોલ્યુશન પણ આપવાની નથી તેવી સરકારી તિજોરી પર તેનું ભારણ નહીં આવે. મુખ્યમંત્રી વિજય રૂપાણીએ આ પ્રકારના એજ્યુકેશન હબની ઉત્કૃષ્ટ રાખી હતી તે આવનારાં વર્ષમાં પૂર્ણ થશે. ઝમનોજ કુમાર દાસ, મુખ્યમંત્રીના અસહાયક

અમેરિકા-યુરોપ જેવું એજ્યુકેશન હબ બનશે. મેડિકલ, એન્જિનિયરિંગથી માંડીને વિશ્વના તમામ કોર્સ માટેની જરૂરી તમામ સુવિધા જેવી કે લોસ્પિટલો, લેબોરેટરી, રીસર્ચ, જેવી સુવિધાઓ અહીં ઉપલબ્ધ હશે. વિશાળ કેમ્પસમાં અહીં આવનારા સમયમાં વિશ્વની 100 શ્રેષ્ઠતમ યુનિવર્સિટીઓ અહીં આવશે તેવું અમારું આયોજન છે. જેને યુનિવર્સિટીના નિયમો પ્રમાણે વિદ્યાર્થીઓને અહીંથી શિક્ષણ, પ્રમાણપત્રો અને પદવીઓ મળશે. પણ માત્ર ગુજરાત કે ભારત જ નહીં પરંતુ આમાં સાઉથ એશિયાના વિદ્યાર્થીઓ માટે આ એક શ્રેષ્ઠ તક હશે, કારણ કે એક જ સ્થળે આવાં એજ્યુકેશન હબ આ ભેટમાં નથી કે જે અમેરિકા અને યુરોપના દેશોમાં છે. ઝજસમીત છાબરા, મેનેજિંગ પાર્ટનર, સેરેસ્ટ્રા

TOURISUM DEVELOPMENT IN STATE

Statue of unity



182 mtr hight
Biggest statue

finished

S.V.Patel Stadium



110000 seats
Biggest Stadium

finished

Dholera SIR




920 sq.KM
Biggest green field
smart city

in progress

“LOTHAL” INDUS VELLAY CIVILIZATION




NATIONAL
MARITIME
HERITAGE
COMPLEX

LOTHAL, GUJARAT
राष्ट्रीय समुद्री विरासत परिसर

today's plan

tomorrow's success



New Era
DEVELOPERS

Real Estate | Plots | Infrastructure | Development

**PHASE - 4
PIPALI**

**PHASE - 12
RAHATALAV**

**PHASE - 13
SHELA**

**PHASE - 5
KAMIYANA**

**PHASE - 9
SHELA**

**PHASE - 7
PIPALI**

**PHASE - 8
SHELA**

**JV
PROJECTS
2018 TO 2020**

**(JV)
GREENTECH
FEDRA**

**DREAM CITY
KHARAD**

**OUR
PROJECTS**

**SHIVNERI
OTTARIYA**

**AJINKYTARA
RATANPUR**



द्वन्द्वस्य
श्रेणारि प्रवृत्तयः

शायगड

प्रतापगड

तोरणा

जंजिरा

पुरंदर

सिंहगड

पन्हाळा

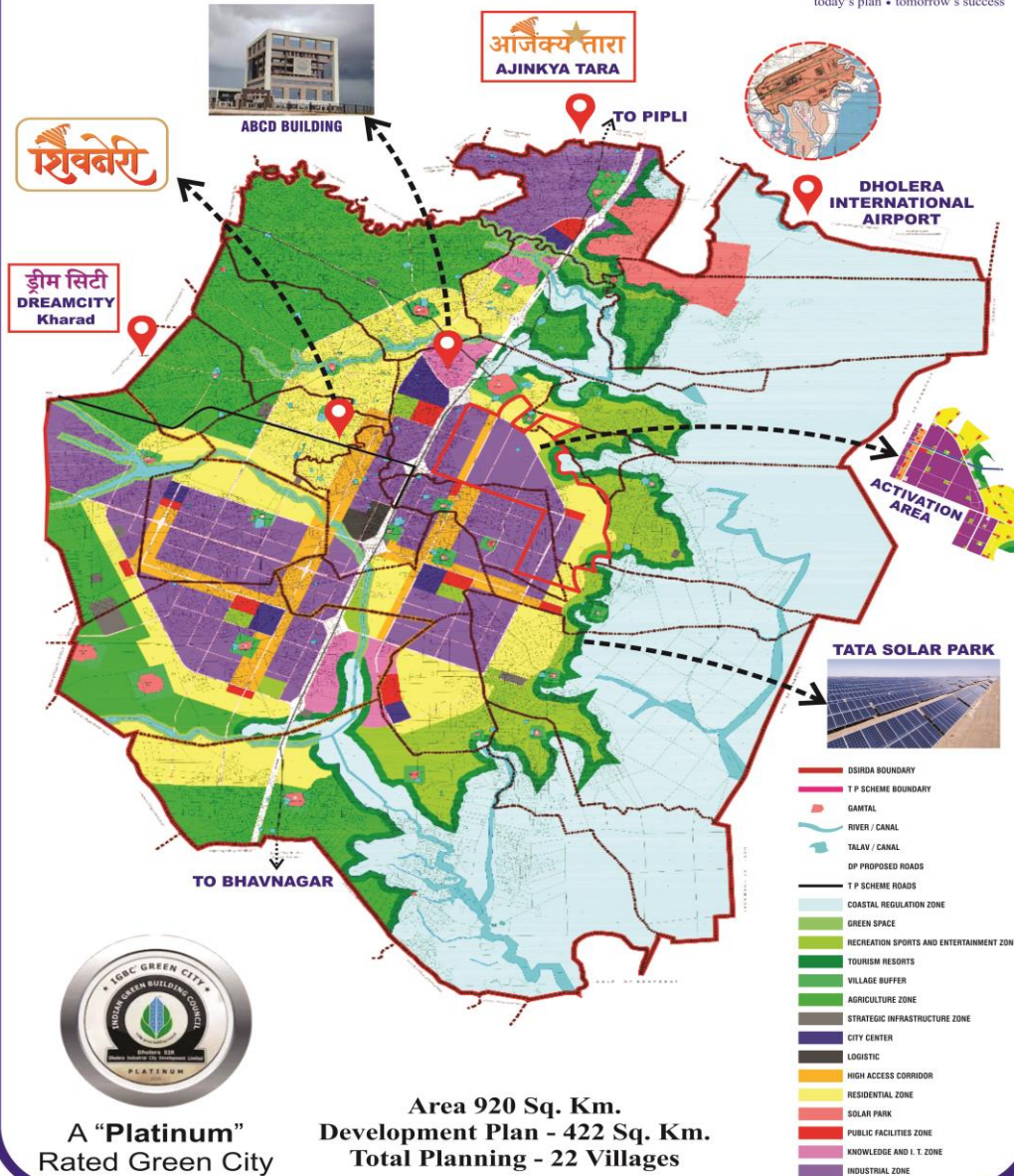
प्रबळगड

dholera

India's First Greenfield Industrial Smart City



today's plan • tomorrow's success



A "Platinum"
Rated Green City

Area 920 Sq. Km.
Development Plan - 422 Sq. Km.
Total Planning - 22 Villages

Dream City

Near by TP2-Dholera SIR

RESIDENTIAL PLOTS @ KHARAD VILLAGE
RESURVEY NO - 1438



Area Sq. Yard Carpet	Area Sq. Yard SBA
50	87

DEVELOPMENT HIGHLIGHTS

- Project Boundary
- Electricity
- Garden
- Internal Road
- Water Connection
- Plot Demarcation



SuTech City

SAFE & SECURED INVESTMENTS IN PROPERTY NEAR BY DHOLERA SIR TP-2

SPOT REGISTRY | NA/NOC-TITLE CLEAR & PLAN PASS

RESIDENTIAL PLOTS

Dholera SIR-GUJRAT (Special Investment Region) NEAR BY PROJECT

VILLAGE : KHARAD NEW SURVE NO : 1438 NEAR BY DHOLERA SIR (500 mtr.)

- ◆ **10% Extra For Corner Plot**
- ◆ **5% Extra For Garden Plot**

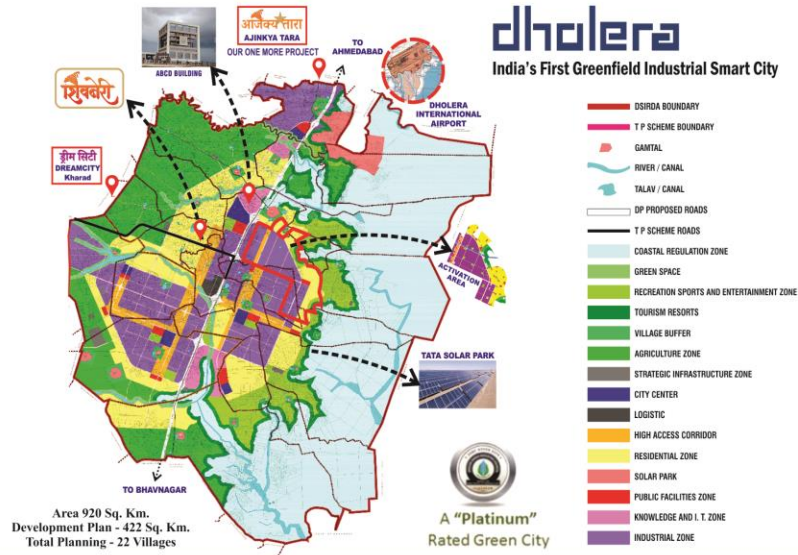
SBA : 783 Sq. ft.
Carpet : 450 Sq. ft.

PLOT COST Rs.: 3,50,000 /-

Development Cost 64/- Sq. ft.

St. Duty / Reg. and 7/12 charges as per Govt. Norms





शिवनेरी

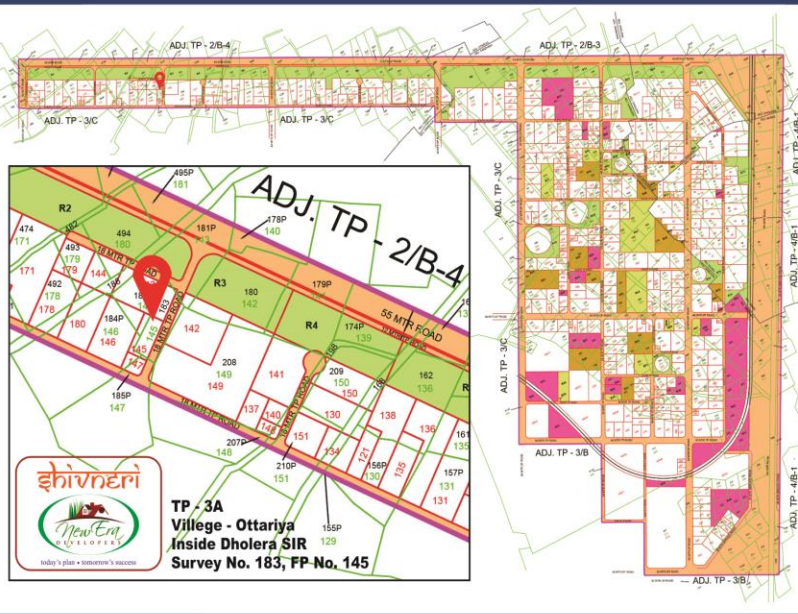
PROJECTS AMENITIES

- Project Boundary wall.
- Entrance Gate.
- Security Cabin.
- CCTV Camera in Common Area.
- Street lights.
- Landscaping in COP area.
- Children Play Area.
- Senior Citizen Area.
- Internal Road with Roadside Plantation.
- Underground Water Pipeline till Plot Boundary.
- Underground Electric line till Common Electric Junction.
- Underground Sewage line till Plot Boundary.
- Underground ICT duct till Plot Boundary.
- Soil Filling up to 1 meter below from Road Top Level.
- Project Developers will maintain the project 2 year beyond the day of completion of infrastructure work of its part.

Final Plot Area - 4856.2 Sq. Mts.
Common Open Plot Area - 493 Sq. Mts. (10.15 %)
Total Road Area - 1057.2 Sq. Mts. (21.77%)
Total Open Area - 1550.2 Sq. Mts. (31.92%)



Plot No.	Width	Length	Sq mt Carpet	Sq mt SBA	Sq Yd Carpet	Sq Yd SBA	Sq ft Carpet	Sq ft SBA
1	14.25	14.10	201	265	240	352	2163	3165
2	14.25	14.10	201	265	240	352	2163	3165
3	28.50	13.50	385	507	460	700	4141	6300
4	11.00	21.00	231	304	276	404	2486	3638
5	11.00	22.50	248	326	296	433	2664	3898
6	11.60	17.25	200	263	239	350	2154	3152
7	11.60	17.25	200	263	239	350	2154	3152
8	11.60	17.25	200	263	239	350	2154	3152
9	11.60	17.25	200	263	239	350	2154	3152
10	11.00	22.50	248	326	296	433	2664	3898
11	11.00	21.00	231	304	276	404	2486	3638
12	28.50	13.50	385	507	460	700	4141	6300
13	14.25	14.10	201	265	240	352	2163	3165
14	14.25	14.10	201	265	240	352	2163	3165



रविवार, दि. 12/03/2023

आजिंक्य तारा
AJINKYATARA

Coming Soon

Milestones From Here....

- International Airport
- Ahmedabad Dholera expressway
- Metro Station
- Dholera SIR
- Shree Kashtbhanjan Dev Hanumanji Temple
- International Lotthal (Indus Vally civilization) museum.

MORE INQUIRY
88280 90745

"ए न्यू एरा डेवलपर्स" ने एक नए प्रोजेक्ट "अजिंक्य तारा" के भूमि पूजन और बोर्ड का अनावरण कार्यक्रम संपन्न किया।



INDIA'S OWN GLOBAL SMART CITY
 LIKE SINGAPUR, PARIS, WASHINGTON & DUBAI.

dholera
 India's First Greenfield Industrial Smart City

- ESIRDA BOUNDARY
- T P SCHEME BOUNDARY
- GAMTAL
- RIVER / CANAL
- TALAV / CANAL
- DP PROPOSED ROADS
- T P SCHEME ROADS
- COASTAL REGULATION ZONE
- GREEN SPACE
- RECREATION SPORTS AND ENTERTAINMENT ZONE
- TOURISM RESORTS
- VILLAGE BUFFER
- AGRICULTURE ZONE
- STRATEGIC INFRASTRUCTURE ZONE
- CITY CENTER
- LOGISTIC
- HIGH ACCESS CORRIDOR
- RESIDENTIAL ZONE
- SOLAR PARK
- PUBLIC FACILITIES ZONE
- KNOWLEDGE AND I. T. ZONE
- INDUSTRIAL ZONE

Area 920 Sq. Km.
 Development Plan - 422 Sq. Km.
 Total Planning - 22 Villages

A "Platinum"
 Rated Green City

A NEW ERA DEVELOPERS (MUMBAI)

आजंक्य तारा
AJINKYATARA

New Survey No. 292
 (Old Survey No. 100/1)
 At : Ratanpur,
 Tal.: Dhanduka
 Dist.: Ahmedabad

New Era
 DEVELOPERS
 today's plan • tomorrow's success

The
FUTURE
 is
HERE

Amenities of AJINKYATARA

Main Gate 	Boundary Wall 	Statue of Chhatrapati Shivaji Maharaj 	Fountain
Plot Boundary 	Joggers Park 	Children Park 	Senior Citizen Park
Bungalow 	Twin Bungalows 	Row House 	Commercial

AJINKYATARA PROJECT HIGHLIGHTES

- Next to GETCO 400 kv Solar Park
- 15 Min. from Dholera SIR
- 10 Min. from Metro Station
- 15 Min. From Dholera SIR International Airport
- 10 Min. from Ahmedabad Dholera Expressway
- 05 Min. from Shree Kashtbhanjan Dev Hanumanji Temple
- 30 Min. from Upcoming International Lotthal Museum

Follow us

8828090745

aneweradevelopers

aneweradevelopers

A New Era Developers

www.neweradevelopers.co.in

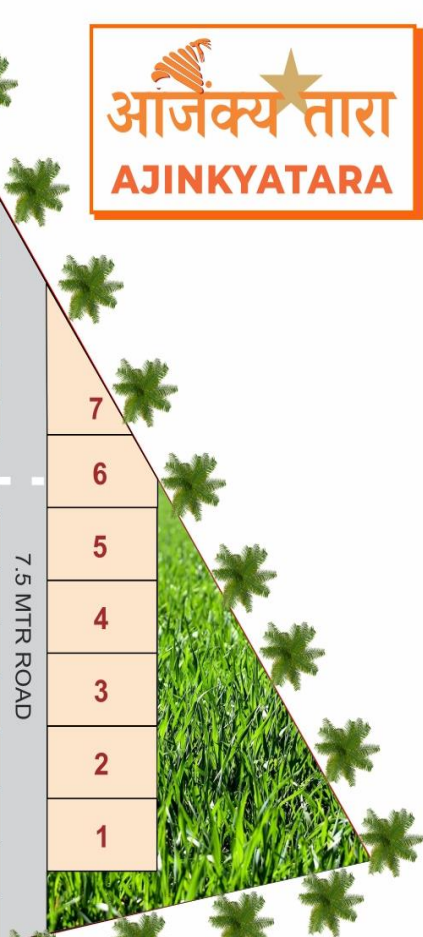


आजक्य तारा
AJINKYATARA



New Survey No. 292
(Old Survey No. 100/1)
At : Ratanpur,
Tal.: Dhanduka
Dist.: Ahmedabad

107	108	131	132	155	156	179	180	203	204	C-19	C-18		
	106	109	130	133	154	157	178	181	202	205		C-20	
	105	110	129	134	153	158	177	182	201	206		C-21	
	104	111	128	135	152	159	176	183	200	207		C-22	
	103	112	127	136	151	160	175	184	199	208		C-23	
	102	113	126	137	150	161	174	185	198	209		C-24	
	101	114	125	138	149	162	173	186	197	210		C-25	
		115	124	139	148	163	172	187	196	211		C-26	
		116	123	140	147	164	171	188	195	212		C-27	
		117	122	141	146	165	170	189	194	213		C-28	
	118	121	142	145	166	169	190	193	214	C-29			
	119	120	143	144	167	168	191	192	215	C-30			
9 MTR ROAD													
100	95	94	77	76	59	58	41	40	23	C-31	C-8		
	96	93	78	75	60	57	42	39	24	C-32		C-7	16
	97	92	79	74	61	56	43	38	25	C-33		C-6	17
	98	91	80	73	62	55	44	37	26	C-34		C-5	18
	99	90	81	72	63	54	45	36	27	C-35		C-4	19
		89	82	71	64	53	46	35	28	C-36		C-3	20
		88	83	70	65	52	47	34	29	C-37		C-2	21
		87	84	69	66	51	48	33	30	C-38		C-1	22
		86	85	68	67	50	49	32	31				
	9 MTR ROAD												



today's plan • tomorrow's success



THANK YOU

www.neweradevelopers.co.in



8828090745